

RG 系列铝电解电容器

RG Series Aluminum Electrc

特征

Feature

- * 寿命: 105 8000 小时
Load life:105 8000 hours.
- * 长寿命
Long life.
- * 符合 RoHS
Compliant to the RoHS Directive

应用

Application

- * 适用于各类开关电源、LED 驱
Ideally designed for all kinds of

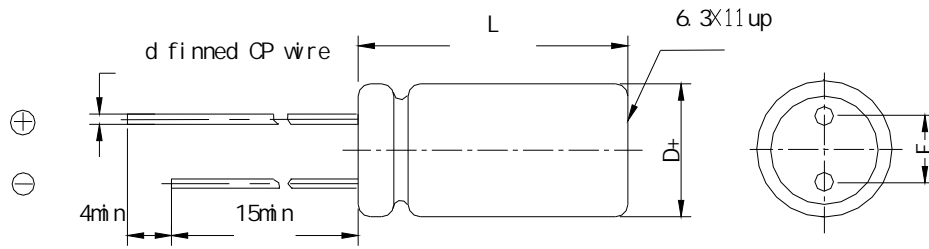
型号表示法

Part Number

8 2 2 0 V A

①

代码 Code	电压 Voltage
MB	160
MC	200
MJ	220
MD	250
MF	350
VA	400
VB	450

产品结构
Product Structure


(mm)	±0.5			±1.0				
D(mm)	5	6.3	8	10	12.5	16	18	22
F±0.5(mm)	2.	2.5	3.5	5.0		7.5		10.0
d±0.1(mm)	0.5		0.6			0.8		
L(mm)	11,12	12,16	12,16,	16,20,25	16,20,25,30,35	20,25,30,35,40	25,30,35,40	
	L±2.0							

主要特性表
Main specifications

主要特性 Performance Characteristics					
额定工作电压范围 Rated Voltage Range	160~450V.DC				
使用温度范围 Operating Temperature Range	-25°C~+105°C				
标称静电容量范围 Nominal Capacitance Range	6.8~220 μ F				
静电容量允许偏差 Capacitance Tolerance	±20% (M, +25 , 120Hz)				
漏电流 Leakage Current (25)	<table border="1" style="width: 100%;"> <tr> <td>额定工作电压(V) Rated working voltage</td> <td style="text-align: center;">160~450</td> </tr> <tr> <td>漏电流 Leakage current</td> <td>2 分钟后 $I \leq 0.03CV+25(\mu A)$ After 2 min . $I \leq 0.03CV+25(\mu A)$</td> </tr> </table>	额定工作电压(V) Rated working voltage	160~450	漏电流 Leakage current	2 分钟后 $I \leq 0.03CV+25(\mu A)$ After 2 min . $I \leq 0.03CV+25(\mu A)$
	额定工作电压(V) Rated working voltage	160~450			
漏电流 Leakage current	2 分钟后 $I \leq 0.03CV+25(\mu A)$ After 2 min . $I \leq 0.03CV+25(\mu A)$				
C: 标称静电容量 (μF) Nominal Capacitance in μF V: 额定工作电压 (V) Rated working voltage in V					
损耗角正切 DF Dissipation Factor	<table border="1" style="width: 100%;"> <tr> <td>额定工作电压(V) Rated working voltage</td> <td style="text-align: center;">160~450</td> </tr> <tr> <td>DF(MAX) (25°C,120Hz)</td> <td style="text-align: center;">0.15</td> </tr> </table>	额定工作电压(V) Rated working voltage	160~450	DF(MAX) (25°C,120Hz)	0.15
	额定工作电压(V) Rated working voltage	160~450			
DF(MAX) (25°C,120Hz)	0.15				
当容量值大于 1000μF 时, 每增加 1000μF, DF 值加 0.02 For capacitance of more than 1000μF,add 0.02 for every increase of 1000μF.					

浪涌电压 Surge Voltage	额定工作电压(V) Rated working voltage	160	200	250	350	400	450
	浪涌电压(V) Surge voltage	200	250	300	400	450	500
温度特性 Temperature Stability	额定工作电压(V) Rated working voltage	160~250		350~450			
	阻抗比(120Hz) Impedance Ratio	z-25 /z+25		3		6	
高温负荷特性 Load life	<p>在+105 环境中施加额定工作电压和最大允许纹波电流 8000 小时后,电容器的性能符合下面要求:</p> <p>After application of rated working voltage with max permissible ripple current specified at +105 for 8000hours, capacitors meet the characteristics requirements measured at +20 listed at below:</p> <p>1、电容变化率:±25%初始测量值以内 Capacitance change : ±25% initial measured value</p> <p>2、漏电流: 初始规定值 Leakage current: initial specified value</p> <p>3、损耗角正切值 200%倍初始规定值 Dissipation factor: 200% initial specified value</p>						
高温贮存特性 Shelf life	<p>在+105 环境无负荷放置 1000 小时后, 根据 JIS-C-5101-4, 加额定电压 30min.,常温放置 24~48 小时后测试, 电容器的性能符合下面要求:</p> <p>After leaving capacitors under no load at +105 for 1000 hours, According to JIS-C-5101-4, apply the rated DC voltage for 30 minutes and store the capacitors under room temperature for 24-48 hours. The capacitors meet the characteristics listed as below:</p> <p>1、电容变化率:±20%初始测量值以内 Capacitance change : ±20% initial measured value</p> <p>2、漏电流: 初始规定值 Leakage current: initial specified value</p> <p>3、损耗角正切值 200%倍初始规定值 Dissipation factor: 200% initial specified value</p>						

尺寸表、允许纹波、电流纹波电流频率因子
Dimensions and ripple current and frequency coefficient
纹波电流频率因子
Ripple current frequency coefficient

Freq (Hz)	50 (60)	100 (120)	1K	10K	100K
Coefficient	0.25	0.50	0.80	0.90	1.00

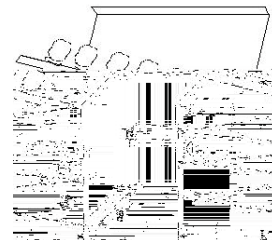
尺寸表与允许纹波电流
Dimensions and ripple current

WV/V Cap/ μ F	160		200		250		350		400		450	
	(1)	(2)	(1)	(2)	(1)	(2)	(1)	(2)	(1)	(2)	(1)	(2)
1.0									8x12	70	8x12	72
1.5									8x14	80	8x14	85
1.8									8x12 10x16	90 100	8x12	90
2.2					8x10	80	8x10	78	10x12	130	10x12	130
2.8					8x12	90	8x12	90	10x16	150	10x16	150
3.3					8x12	100	8x12	100	10x16	160	10x16	160
4.0					8x12	120	8x12	120	10x20	150	8x16 10x16	128 220
4.7					6.3x12 8x12	140 100	8x12	130	10x12 10x16,20	180 200	10x12 10x16,20	180 200
6.8					8x12 10x16	150 180	10x16	220	10x14 10x20	220 250	10x14 10x20	220 250
8.2	8x12	110	8x16	230	8x16	150	10x16	250	10x16 10x20	230 240	10x14 12.5x20	180 220
10	6.3x9 8x12	230 250	8x12 10x16	180 250	8x16 10x12	230 230	10x20	280	10x20 12.5x20	280 280	10x20 12.5x20	300 300
15	8x16	250	10x16	280	10x16 12.5x20	250 450	10x20	300	10x16 10x20	250 290	12.5x20	300
22	8x12 10x20	350 500	10x20	500	10x20 12.5x20	500 600	12.5x20	350	12.5x20 12.5x25	400 430	16x25 18x20	560 560
27	10x16	450	10x20	550	12.5x20	500	10x30	450	12.5x30	410	16x25	400
33	10x20	500	12.5x20 22x30	600 1800	12.5x20	600	16x20	500	16x30 18x20	640 640	16x30 18x25	700
47	12.5x20	660	12.5x20	660	12.5x25 16x20	720 720	16x25 18x20	660 660	16x30 18x25	840 840	18x25 18x30	700 880
68	12.5x20 12.5x25	760	12.5x25 16x20	760	16x25 18x20	720	16x25	820	16x30 18x25	840	18x30	880

SC 00 21 0 0 0 9

包装
Packaging
*** 编带产品包装规范与数量 Taped packaging quantity**

直径 D(mm)	数量(只) Qty. (Pcs)	L(电容高度) 22mm	L(电容高度)=25±2mm
		LxWxH(mm)	LxWxH(mm)
5	2000	328×235×50	328×235×57
6.3	1500		
8	1000		
10	600		
12.5	400		
16	250		
18	200		


*** 散装品包装数量 Bulk packaging quantity**

直径 D(mm) Diameter	高度 L(mm) Length	数量 (只/袋) Quantity (pcs/bag)	袋/盒 bag/box	内箱/外箱 Inner box/outer box	(只/箱) psc/box
4	7-8	1000	15	4	60000
5	5-7	1000	12	4	48000
5	11	1000	10	4	40000
6.3	5-7	1000	10	4	40000
6.3	8-15	1000	8	4	32000
6.3	15-20	1000	6	4	24000
8	5-12	500	8	4	16000
8	14-16	500	8	4	16000
8	20	500	6	4	12000
10	9-13	500	6	4	12000
10	14-16	250	8	4	8000
10	17-20	250	8	4	8000
10	25-30	200	8	4	6400
10	31-35	200	6	4	4800
12- 13	16-28	200	6	4	4800
12- 13	30-40	100	8	4	3200
12- 13	45-55	100	6	4	2400
16	15-20	100	8	4	3200
16	21-30	100	6	4	2400
16	31-40	50	10	4	2000
18	15-20	100	6	2	1200
18	25-30	50	8	2	800
18	35-40	50	6	2	600
18	41-50	25	10	2	500
20	25-40	50	10	2	1000
22	25-35	50	5	2	500
22	40	25	10	2	500